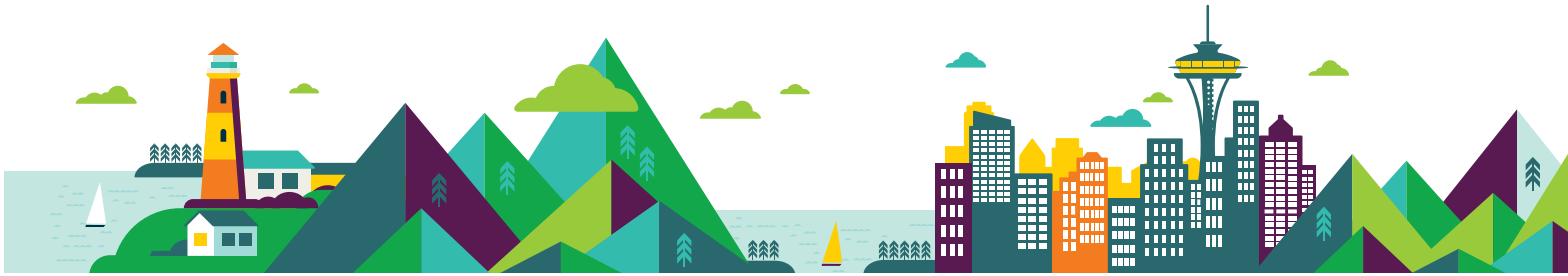


# Washington State Department of Health Care-A-Van



## Background

The Washington State Department of Health (DOH) is launching a new mobile vaccination effort across Washington state. We will work closely with community partners and local health jurisdictions to increase access to vaccine for priority communities.



## Site Prioritization

The Care-A-Van serves communities disproportionately impacted by COVID-19. Requests that cover multiple priority areas below will be given higher priority:

- Counties with higher **vaccine gaps by race/ethnicity**.
- Communities with a high rank on the **Social Vulnerability Index (SVI) for COVID-19**.
- Sectors with recent outbreaks.
- Communities overrepresented in **COVID-19 cases, hospitalizations, and deaths**.
- Demographic groups with **lower vaccination rates** compared to other groups.
- Groups not represented or underrepresented in current DOH data systems that have likely experienced COVID-19 health disparities and vaccine inequities.
- Geographic locations that have not had a visit from the DOH Care-A-Van.

Interested in bringing the Care-A-Van to your community? Visit [doh.wa.gov/careavan](https://doh.wa.gov/careavan) for more information.

